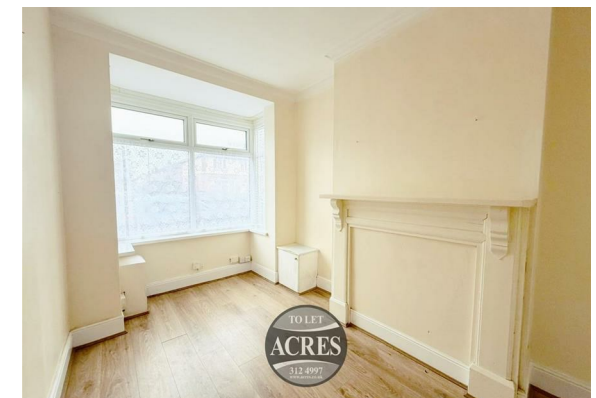


ACRES

Lettings Office: 28 Beeches Walk, Sutton Coldfield, B73 6HN
☎ 0121 312 4997 ✉ lettings@acres.co.uk

@ www.acres.co.uk

- Mid -Terraced house
- 3 Bedrooms
- 2 Reception rooms
- Practical kitchen
- Downstairs bathroom
- Private garden
- Council Tax Band A

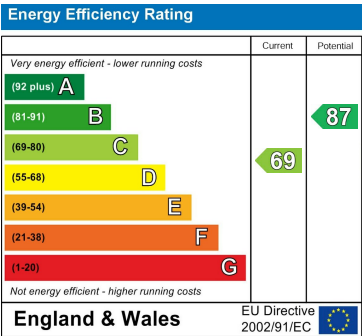


STONELEIGH ROAD, , B20 3AS - £1,000 (FROM) PCM



COUNCIL TAX : A

VIEWING: Highly recommended via Acres on 0121 312 4997



Every care has been taken with the preparation of these Particulars but complete accuracy cannot be guaranteed. If there is any point, which is of particular importance to you, please obtain professional confirmation; alternatively, we will be pleased to check the information for you. We have not tested any apparatus, equipment, fixture, fittings or service and so cannot verify they are in working order, fit for their purpose, or within ownership of the sellers. All Dimensions are approximate. Items shown in photographs are NOT included unless specifically mentioned in writing within the sales particulars. They may however be available by separate negotiation.